



Face mapping software

STUDIO MAPPER

**Geological Face
Mapping & Sampling
Solution**

WHO USES PRODUCT:

- ✓ Production Geologists
- ✓ Geology Technicians
- ✓ Samplers

STUDIO MAPPER

Studio Mapper is a task-focused geological face mapping and sampling application designed for both tablets and desktop computers.

Mapper is built on the Studio core platform and can be used with Studio RM to dynamically update geological models from routinely mapped data. Access to a digital record of features affecting ore control leads to a more reliable resource model and a reduction in the risk associated with geological uncertainty, which in turn results in more targeted and accurate production planning.

Studio Mapper encourages controlled capture, storage, sharing and processing of mapped features by employing a fully digital and paperless workflow.

WHY USE STUDIO MAPPER



SAFETY

Reduced time at the face required to capture a digital record of the rock mass. If time is limited, photographs can be taken at the face and mapping done away from the mining area at a later stage.



EASY TO USE

Important for routine work such as mapping. Only two days of training with an even shorter learning curve for existing Studio users.



INCREASED MAPPING COVERAGE

The increase in capture speed will lead to greater coverage per mapping geologist.



REMOVE DOUBLE HANDLING OF DATA

Duplication of work and data involved in using a paper-based mapping system can be removed.



DYNAMICALLY UPDATE MODELS

Ensure key decisions are made using the latest available information.

KEY BENEFITS



DETAIL AND ACCURACY

Increased detail and accuracy of mapping data which cannot be achieved using paper and pencil methods.



FASTER TURNAROUND AND DELIVERY TIME

Faster turnaround and delivery time of underground face data means that planning decisions can be better informed and made sooner.



CRITICAL INTERPRETATIONS

Faster turnaround and delivery time of underground face data means that planning decisions can be better informed and made sooner.



REFERENCE DATA

Reference data whose use has typically been limited to the office can be imported into Studio Mapper and visualised underground at the working area.



REPORTS

Standard reports can be produced automatically, and their content can be defined to meet site-specific requirements



SHARE

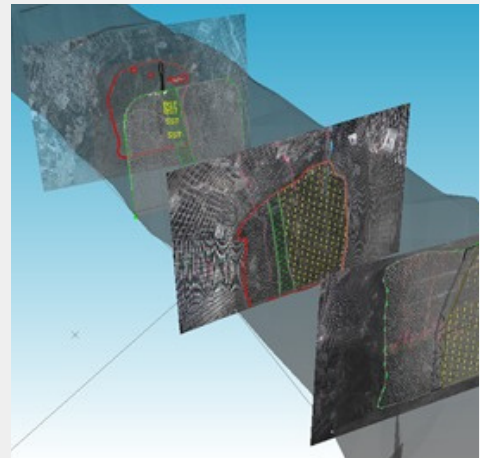
Access to a wide range of data means geologists can make interpretations within a 3D environment containing previously captured maps, drillhole intersections and existing structural interpretations.



SOFTWARE FEATURES

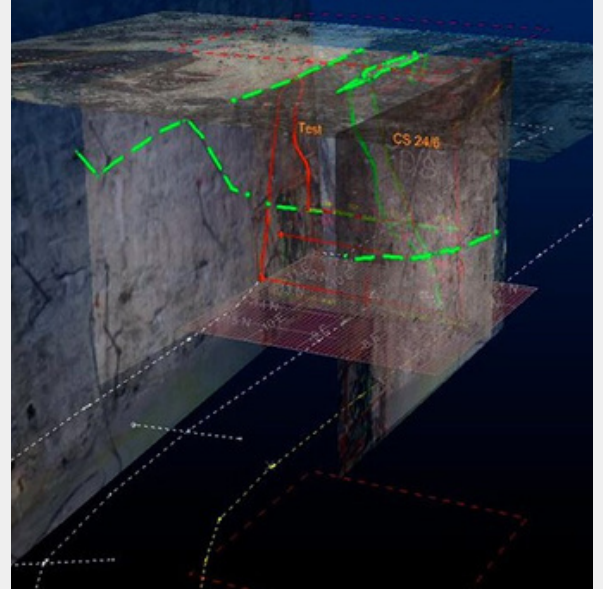
- ✔ Studio Mapper, together with Studio RM, is the only integrated mine mapping and structural modelling solution delivered on the same platform with a consistent user experience.
- ✔ Import support for a wide range of data formats means reference data can easily be imported.
- ✔ Structured data storage ensures that all mapping is securely stored and categorised according to the working area and is available to other departments and users.
- ✔ Suitable for a wide range of portable Windows® touch devices with an extensive digitising toolset specifically designed to respond to stylus and gesture input.
- ✔ Flexible configuration that allows for fully customised field capture. All geological and structural codes, visual formatting such as linestyles and hatching, as well as custom reports can be defined and distributed to all users.

Designed for both touch and desktop devices, Studio Mapper stores field data in a managed but flexible database that encourages controlled data capture, storage, sharing and processing.



SOFTWARE FEATURES

- ✔ Obtain precise structural measurements using automatically calculated values for strike, dip and dip direction, with automatic annotation and label generation.
- ✔ Capture, edit and georeference channel samples, insert dedicated QA/QC standards or duplicates and assign areas of influence for each sample to calculate average face grades.
- ✔ Import, scale and digitise mapping directly onto photographs.
- ✔ Georeference mapping data either at the face or later in your workflow by utilising the latest survey stations, as-built models, or input a peg- to-face measurement to calculate the position.



CONTACT US



www.dataminesoftware.com

AUSTRALIA | BRAZIL | CANADA | CHILE | CHINA |
ECUADOR | GHANA | INDIA | INDONESIA |
KAZAKHSTAN | MALAYSIA | MEXICO | MONGOLIA |
PERU | PHILIPPINES | SOUTH AFRICA | TURKEY |
UNITED KINGDOM | USA